

Freelite™

Models: PVB900-BL & PVB909-BL

TUI LED Solar Bollard Lights with microwave sensor Installation Instructions

ENSURE YOU READ THE INSTRUCTIONS FULLY BEFORE COMMENCING INSTALLATION.

These lights offer you control over your lighting preferences boasting 6 different lighting mode options. The light, photovoltaic panel and battery with Energy Management System (EMS) are all in one, with a Remote included to set the lighting modes. Use in areas where light is needed and where you wish to reduce light pollution, or additionally in special habitats where you want to protect wildlife in your area choose the wildlife option.



LOCATION OF INSTALLATION

For best results your PVP panel should be exposed to as much direct sunlight as possible. When positioning the light, account for objects that may cast shade for example fences and trees. In winter, the sun sits lower, and days are shorter, so ensure the PV panel has clear exposure to maximize battery charge during shorter days.

The microwave sensor detects vibration changes, triggering the light. To avoid unwanted activation, carefully choose the bollards location, avoiding areas near occupied buildings or air conditioning unit motors etc, which may set off the sensor.

PREPARATION BEFORE INSTALLATION:

Before unpacking the light, prepare a soft, clean surface like cardboard to avoid damage from harsh surfaces like concrete.

- Unpack and inspect the contents for damage.
- Switch On by pushing the ON button on the remote control.
- To test, cover the photovoltaic panel with a towel (or similar) or take the bollard into a dark room to activate the light.

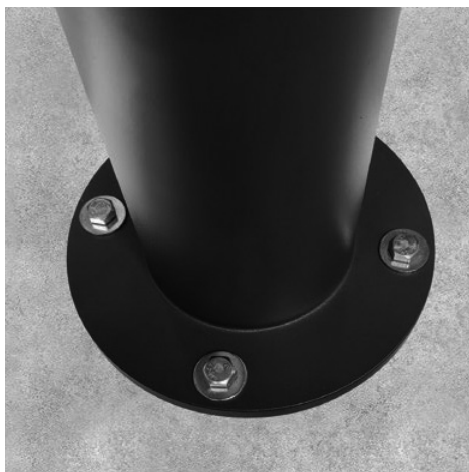
Important:

This product can be charged while powered off. We recommend charging it for at least one full day with good sun exposure prior to activating the lighting function to ensure an optimal initial full charge.

INSTALLATION:

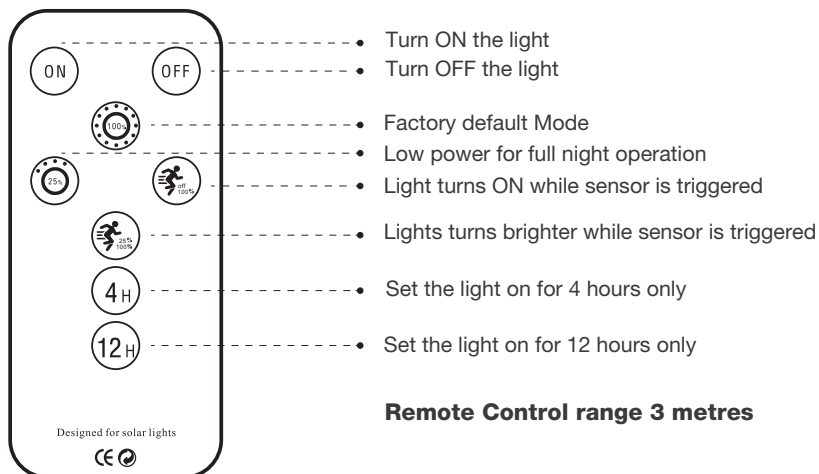
Fasten the light vertically to a concrete path, a large paving slab, cast concrete plinth or decking using the base flange provided. If placed in a garden, ensure it is placed in a raised area of the garden so that water does not pool around and damage the paint finish. Fasten securely through the 4 holes in the mounting base ensuring it is stable. Use fixings suitable for the substrate the light is being fixed onto.

Bollard lights can be placed temporarily for checking light coverage but ensure they are stabilised. For multiple bollards space them about 8 meters apart for continuous lighting.



OPERATION:

To activate the lighting Function, use the provided remote control



Remote Control range 3 metres

Remote control:

Factory default mode: The EMS energy management system gradually steps down the light level during the night to ensure a battery level is retained for subsequent nights with a similar lighting cycle. The EMS ensures the light is running throughout the whole night, it automatically turns the light on at dusk and turns it off at dawn.

Sensor Modes:

When the microwave sensor detects movement, Light output will be boosted and stay there until there has been no movement for a period of 30 seconds.

Remote control modes:

- The **ON** and **OFF** buttons are to force the Light ON or OFF
- The **100%** button sets the light to the default mode, on all night with gradual step-down program.
- The **25%** button sets the light to run at the reduced light output all night.
- The **off 100%** button, light is off, when movement is detected light turns on to full brightness.
- The **25% 100%** button, light is on at reduced light output all night, when movement is detected light turns on to full brightness.
- **4H** button 4 hours on, then off
- **12H** button 12 hours on, then off

For good battery autonomy over several days, especially over cloudy and short winter days, using one of the 2 sensor functions is preferable, use **off 100%** or **25% 100%** buttons.

PRODUCT SPECIFICATIONS:

Model	PVB900	PVB909 (wildlife)
PVP Voltage	5V Monocrystalline	5V Monocrystalline
Battery Voltage	3.2V lithium Iron Phosphate LiFePO ₄	3.2V lithium Iron Phosphate LiFePO ₄
LED wattage	1.5 Watts high output	1.5 Watts high output
PV peak wattage	6.2 Watts	6.2 Watts
Battery Watt-hours	38.4 Wh	38.4 Wh
Colour Temperature	2,800K	Wildlife LED chip
Measured Lumens	220 Lm	198 Lm
Battery autonomy	2-3 days of cloud	2-3 days of cloud
Dimensions	900mm height x 275mm diameter, post 102mm diameter	900mm height x 275mm diameter, post 102mm diameter
Microwave Sensor	8M range, 360 degrees	8M range, 360 degrees
Light beam angle	360 degrees, vertical axis 145 degrees	360 degrees, vertical axis 145 degrees
Water Ingress Protection	IP65	IP65
Materials	Heavy Duty 6mm thick aluminium post and SABIC Brand UV stabilised polycarbonate	Heavy Duty 6mm thick aluminium post and SABIC Brand UV stabilised polycarbonate
Impact resistance	IK10++	IK10++

MAINTENANCE.

Important:

Important: Rain will wash dust off from the PVP however other debris will need cleaning off periodically with soapy water and a soft brush to maintain battery condition.

If this product is not working and is still not working after referring to the info centre guide on www.alphalighting.co.nz do not attempt to repair the fitting yourself – please contact Gartner Superlux Ltd for advice.

Note:

The battery is a recyclable item, at the end of life ensure you dispose of the product responsibly.

Due to continuous design improvement, specifications are subject to change without notice.

**IMPORTANT KEEP INSTRUCTION SHEET
IN A SAFE PLACE FOR FUTURE REFERENCE**