

Square Module MR16 Downlight

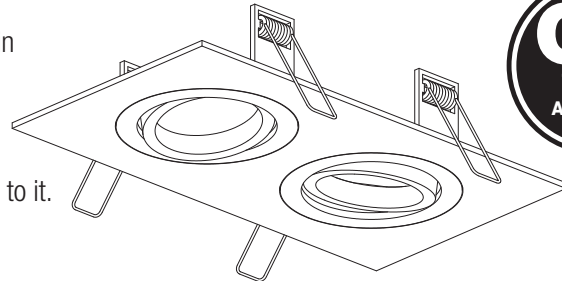
Model: SV-STLT Downlights 12 Volt - 50W MAX

Installation Sheet

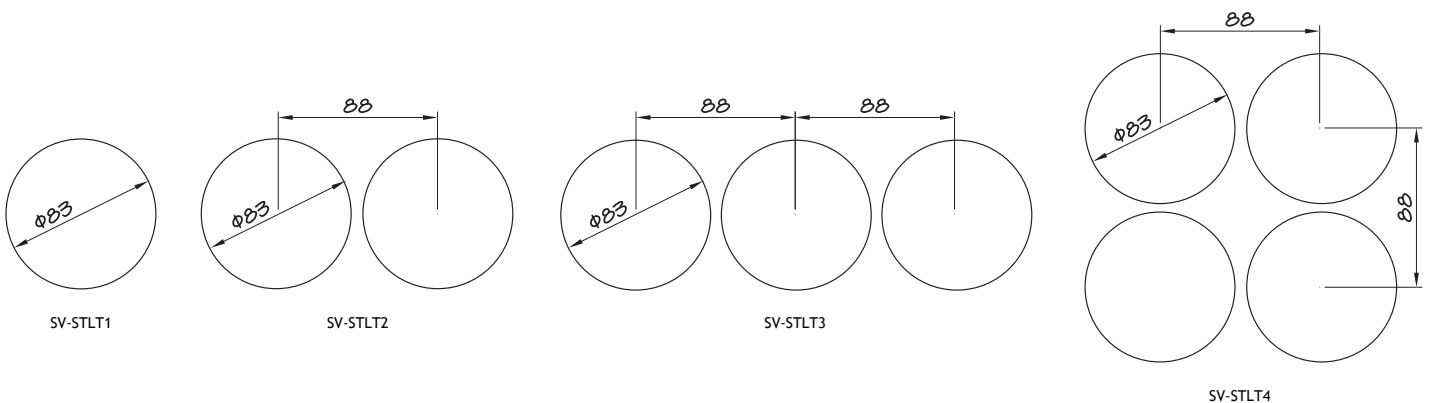


General Instructions

- Ensure the fixture is not illuminating flammable materials within 1 metre from lamp.
- Lamps run hot, allow to cool before handling.
- When using building insulation with zero rated flammability (eg.) Fibreglass, this unit will run safely with insulation abutted to it.
- Maintain at least 100mm clearance from all timber to sides.
- Use Superlux transformers.
- Ensure supply cable is kept clear of lamps.

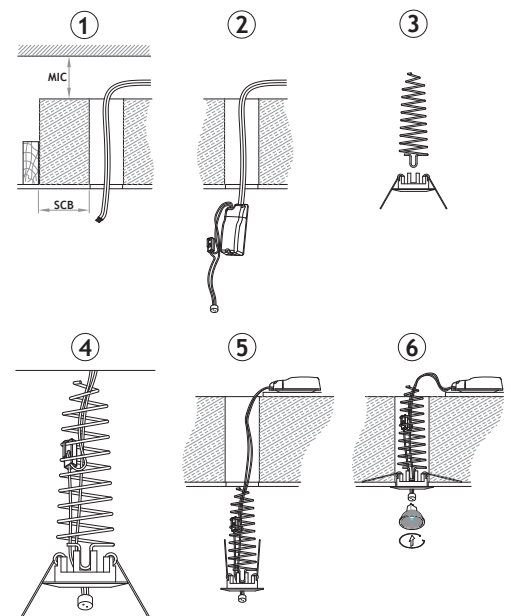


	Aperture Sizes		Minimum Cavity Depth
	Square Cut	or Circular Cut	
SV-STLT-1	83mmØ	83mmØ	200mm
SV-STLT-2	83 x 170mm	2 x 83mmØ	200mm
SV-STLT-3	83 x 254mm	3 x 83mmØ	200mm
SV-STLT-4	170 x 170mm	4 x 83mmØ	200mm



Installation Instructions:

1. Install using a registered electrician. When choosing downlight position ensure that MIC=50mm, SCB=100mm and HCB=20mm clearances are adhered to.
2. Cut hole/s through building insulation the same diameter as the CA-Coil 70mmØ.
3. ISOLATE POWER SUPPLY, connect TPS cable to transformer assembly.
4. Stretch ventilation coil to height of building insulation.
5. Clip the red thermal cut off protector to coil with only enough give for lamp replacement.
6. Place transformer on a piece of board on top of insulation ensuring ventilation of transformer.
7. Fit downlight into hole by holding back spring clips and inserting into hole.



Risk of Fire: Building insulation must not cover the luminaire.