

CA135 ENGINEERED FOR FIRE SAFETY FOR YOUR PEACE OF MIND®

Cut along dotted line for correct template size

Low Glare Darklighter

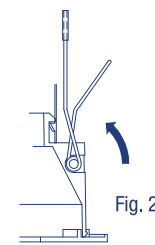
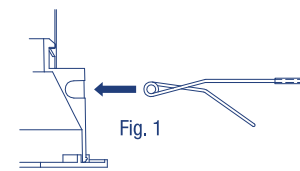
SD127

superlux



SD127
Low Glare Darklighter

SD127
Low Glare Darklighter



L951

Silver



SD127-SI

Basic Installation Instructions

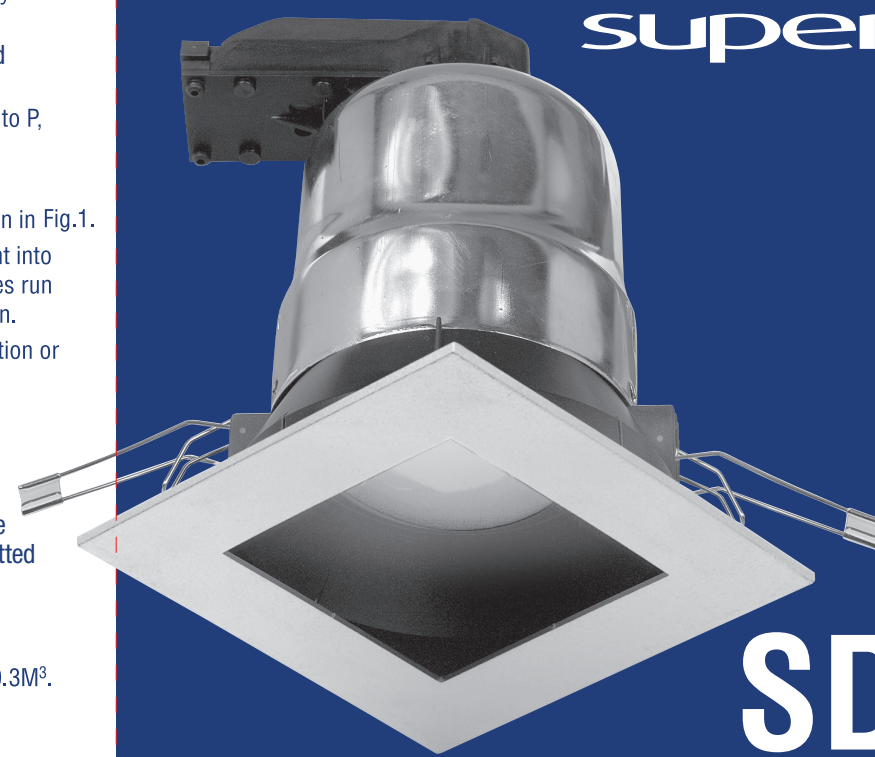
- ISOLATE THE ELECTRICAL SUPPLY.
- Cut a 127mm hole, at least 25mm clear of any building elements.
- Ensure there is no less than 50mm ventilated space above the building insulation.
- Connect cables 220V-240V 50Hz Brown/Red to P, Blue/Black to N.
- Fit cover to clamp cable.
- Fit the 2 spring clips into body sides as shown in Fig.1.
- Lift the 2 spring clips (Fig.2) and fit Downlight into the ceiling hole, making sure the supply cables run away from the fitting above building insulation.
- Do not push Downlight up underneath insulation or cover top of downlight.

Installation Details

- Moisture transfer category = Closed.
- Thermal efficiency = Abutted.
- This unit will run safely with non-combustible building insulation blankets or segments abutted to sides. If accidentally covered by building insulation material the outer body will not exceed 150°C.
- Minimum recommended sealed cavity size = 0.3M³.
- Cavity depth = 210mm minimum.
- Lamp is E27 R80, 100W Maximum.

CAUTION: Recessed Luminaires and their associated equipment may pose a risk of fire or damage to property if not installed and maintained correctly.

superlux



SD127
Low Glare Darklighter

superlux

Features

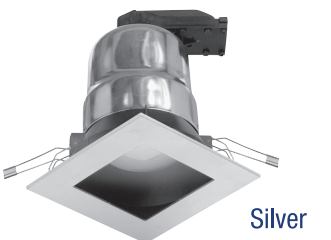
- Quick and easy to install.
- Double insulated.
- Fits in round 127mm hole.
- Class CA135. Building insulation may be abutted. Refer to the instructions.
- Enclosed body eliminates moisture transfer and drafts.

Made in New Zealand by

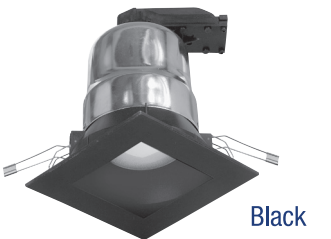
Gartner Superlux Ltd
AUCKLAND NEW ZEALAND.

Design Copyright 2004

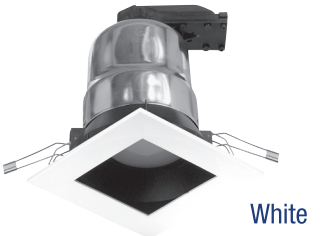
SD127
Low Glare Darklighter



Silver



Black



White

CA135 ENGINEERED FOR FIRE SAFETY FOR YOUR PEACE OF MIND®

CA135 ENGINEERED FOR FIRE SAFETY FOR YOUR PEACE OF MIND®

CA135 ENGINEERED FOR FIRE SAFETY FOR YOUR PEACE OF MIND®

CA135 ENGINEERED FOR FIRE SAFETY FOR YOUR PEACE OF MIND®

L951