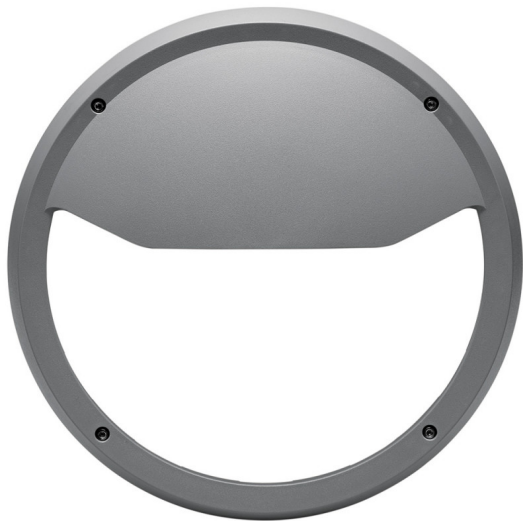


Eyelid Marco Cover
Model: LK3053-SI



DIMENSIONS	FEATURES	SPECIFICATIONS
300mmØ x 90mm.	<ul style="list-style-type: none">• ABS Cover for LED Marco Bulkheads (Cover only).• Interchangeable covers fit easily onto the bodies of the Marco range (LK3050 & LK53050).• Covers available in 3 colours: Charcoal, Silver or White.	Indoor / Outdoor: Indoor, Outdoor Colour: Silver/Grey